

Golygfa'r Dolydd Meadows View

Residential home for care
experienced children



Cefnogiwr gan Fwrdd Partneriaeth
Rhanbarthol Cwm Taf Morgannwg
Supported by the Cwm Taf Morgannwg
Regional Partnership Board



ABOUT Golygfa'r Dolydd Meadows View

Golygfa'r Dolydd/ Meadows View is a residential home for care experienced children aged between 6-17 years old.

The home has seven bedrooms, four of which are registered for placements that can last up to 12 months.

The three remaining rooms are for emergency purposes, providing accommodation for up to 28 days.



24

Experienced staff members

12

young people supported since becoming operational in 2023

16 months

Build time from May 2022 to September 2023

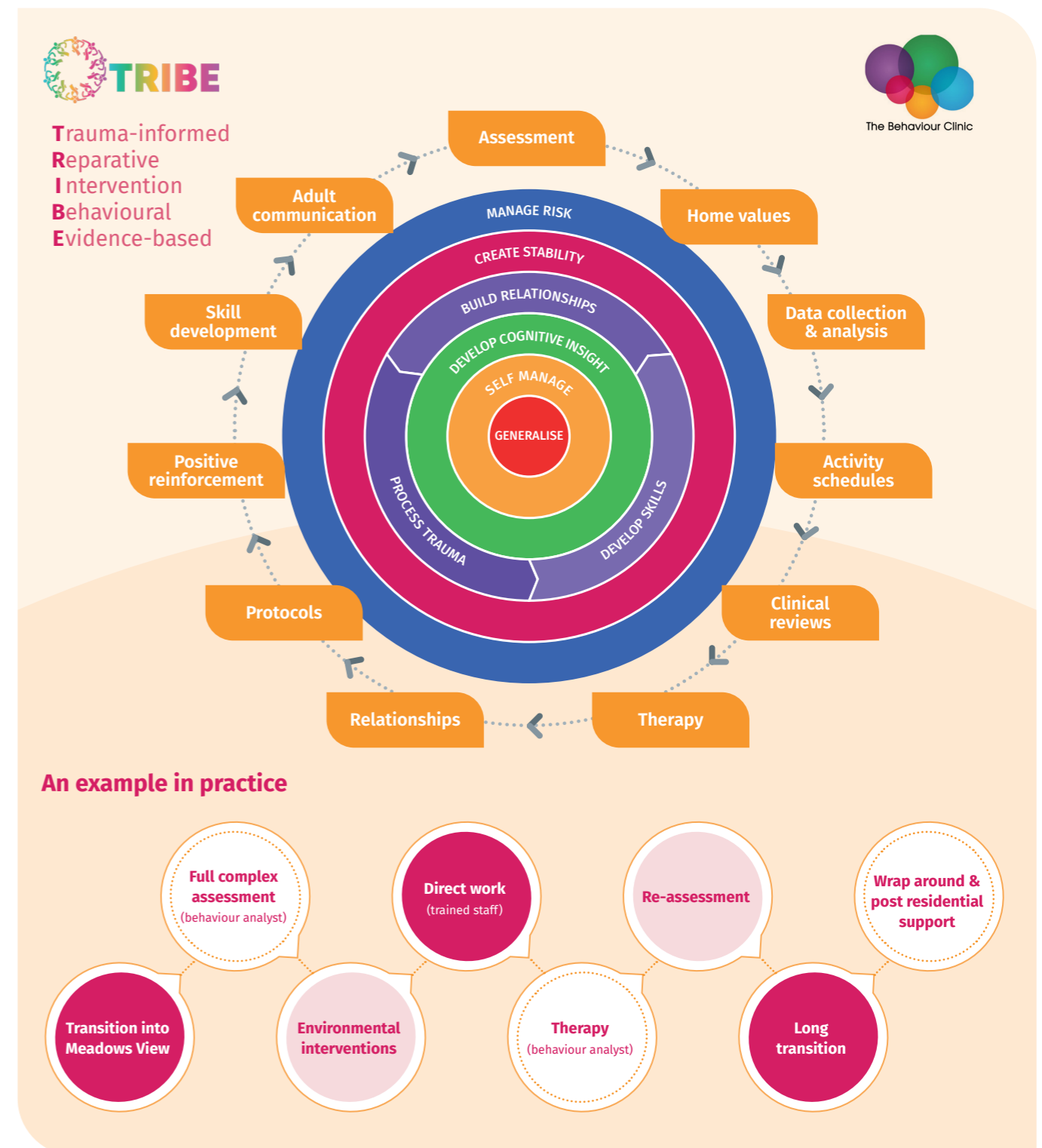
7 bedrooms

for children aged between 6-17 years old

The TRIBE model

Staff are trained to follow a trauma informed model.

This approach helps to mitigate the need for long-term residential accommodation, so an assessment can be carried out, and the most appropriate long-term placement can be achieved. Staff use the TRIBE model to support children who are residing at the home.



JOURNEY

Golygfa'r Dolydd Meadows View

The remodelling of the building began in 2019, on the site of the former Brynmenyn Primary School in Bridgend.

The team used the MoSCOW (Must, Should, Could, Would) method to develop the design concept, ensuring the voices of children, staff and wider stakeholders were at the heart of decisions.

The feedback suggested the model needed to include:

- Comprehensive assessments
- Consistent evidence-based practice, giving staff 'practical in the moment support'



JOURNEY

Investment

The financial investment in the building is as follows:

Welsh Government funding (supported by the Cwm Taf Morgannwg Regional Partnership Board)

£1,063,532

Integrated Care Fund
Capital funding

£608,118

Housing with Care
Capital funding

£1,451,733

Bridgend County Borough
Council core funding



LIVING AT Golygfa'r Dolydd Meadows View

Children who have experienced living at Golygfa'r Dolydd/ Meadows View, say:

I **loved** going on holiday in the caravan with staff

I like all the fun stuff we do. The staff care about me and help me to do **good stuff**

I'm **happy** at Meadows View and I know everyone cares about me

I'm **glad** that I can go rugby training and spend time with my friends

I love Meadows View and would like to **live here forever**

Contact details

For more information, please contact
Dan Bolton, Principal Officer/ Responsible
Individual, Bridgend County Borough Council
daniel.bolton@bridgend.gov.uk



Find out more about the team behind the TRIBE model here:
thebehaviourclinic.com/about